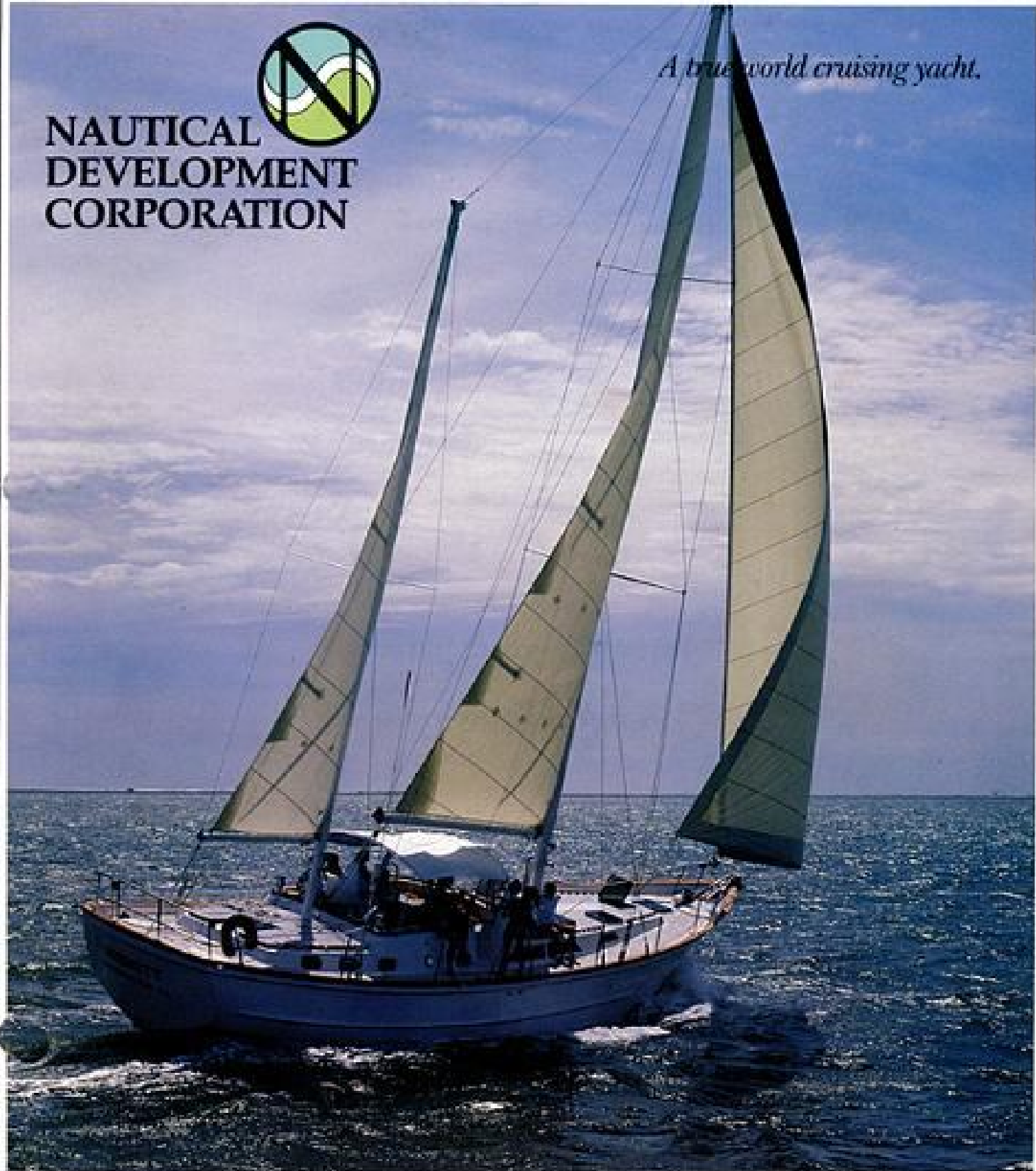


# NAUTICAL/56



**NAUTICAL  
DEVELOPMENT  
CORPORATION**

*A true world cruising yacht.*





**H**ere is a world cruising yacht designed for blue waters and far horizons...sturdily constructed and superbly finished...a masterpiece of quality without compromise. She is a product of years of experience in the West Indies chartering industry, built to stand up to the rigors of chartering in the trade winds, where a vessel receives many years of normal wear and tear in only one season.

Her interior is spacious to the point of extravagance. With four private staterooms and heads, she will accommodate up to eight persons in comfort and luxury. She is designed to meet the practical, day-to-day

demands of chartering living aboard, or extended cruising.

Descending the companionway ladder into the 15'x10'7" salon, you are greeted by the warmth of teak paneling, solid teak trim, teak parquet sole and luxurious upholstery. To port is a large "U" shaped dinette which will seat five, or up to eight with extra chairs. To starboard is an efficient navigator's station with plenty of space for electronics, plus drawers, bookshelf and chart storage. Forward of that is an "L" shaped settee and cocktail table/storage chest.

The two forward port and starboard staterooms each open off the salon, and

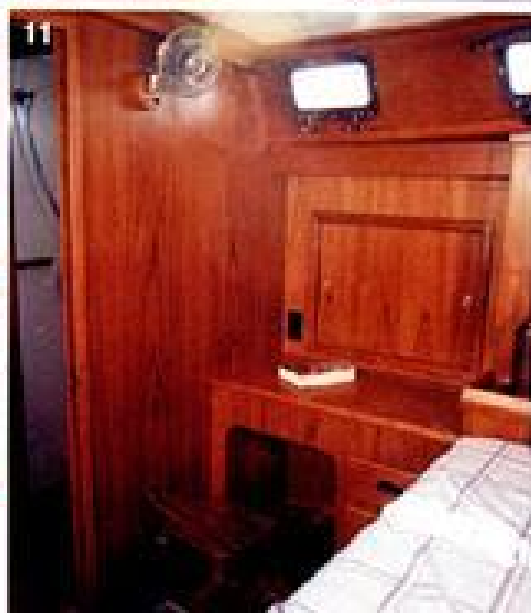
each has a private head forward with a common shower compartment between. Each has two berths with an upper/lower arrangement on the centerline. Ample storage space is located under the outboard berths.

A very large sail locker with deck access is forward of the staterooms, and the rope locker is located in the forepeak.

The optional captain's stateroom is located to starboard, behind the navigator's station. It contains two berths and a private head, with engine access under the centerline berth. This berth can be completely removed for even greater accessibility if necessary.



- 1. Dinette
- 2. Navigator's Station
- 3. Galley
- 4. Salon settee
- 5. Forward staterooms
- 6. Captain's stateroom
- 7. Cockpit
- 8. Aft stateroom
- 9. Electric winch and stern-head fitting with anchor roller
- 10. Engine compartment with berth removed
- 11. Vanity in aft stateroom



The galley is on the port side aft of the dinette, with a convenient serving counter, two top-loading insulated ice chests (refrigeration and freezer systems optional), twin stainless steel sink, three burner LP gas stove with oven, and a large pantry area on the starboard bulkhead.

The great cabin aft features a queen size double berth, private head with enclosed compartment, vanity, and ample bureau and hanging locker space.

The deck layout is clean and uncluttered for ease of sail handling or just lounging in the sun, both fore and aft. The center cockpit with its high cuamings and pedestal-mounted dropleaf table is the social center

whether under sail or at ease at anchor or at the dock. Six large Lexan hatches provide excellent lighting and ventilation below deck.

Power is provided by a 120 hp Lehman Ford diesel. Major options include marine reverse cycle air conditioning, 7.5 kw Oran diesel generator, and 12 volt anchor windless system. Major or minor customizing is available, and will be priced on request.

The NAUTICAL 56... a true world-cruising yacht in the finest tradition... for the discriminating yachtsman who will not accept less than the finest that modern technology and Old World Craftsmanship can produce.

*\*Optional - deep pile carpeting, standard throughout*



**NAUTICAL  
DEVELOPMENT  
CORPORATION**

2055 34th Way, Largo, FL. 33514  
Telephone (813) 531-4674

# NAUTICAL/56.

## SPECIFICATIONS

L.O.A.: 55'9" (16.98 m.)  
 L.W.L.: 45'4" (13.82 m.)  
 Beam: 15'7" (4.78 m.)  
 Draft: 5'6" (1.7 m.)  
 Displacement: 51,000 lbs. (22,679.6 kg.)  
 Ballast: 14,000 lbs. (5,443 kg.)  
 Sail Area: 1,205 sq. ft. (111.48 sq. m.)  
 Fuel: 200 gal. (757 lit.)  
 Fresh Water: 500 gal. (1,892.7 lit.)  
 Designers: Steve Gosson  
 Roger Warner

*The finest that  
modern technology and  
Old World craftsmanship  
can produce.*



Some items shown in drawings and photos are optional equipment available at additional cost. Please refer to standard and optional equipment list.

©1980, Nautical Development Corporation