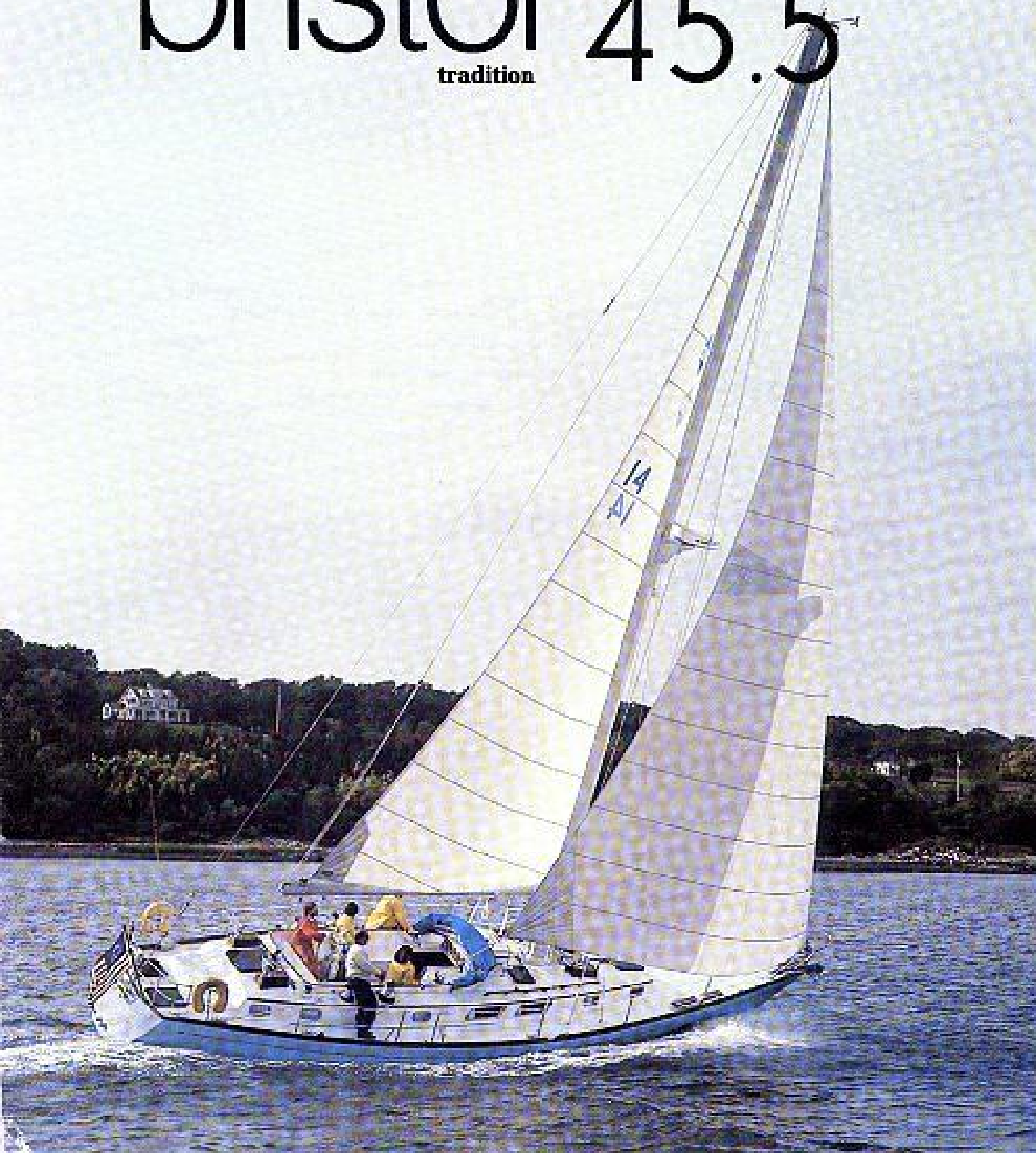
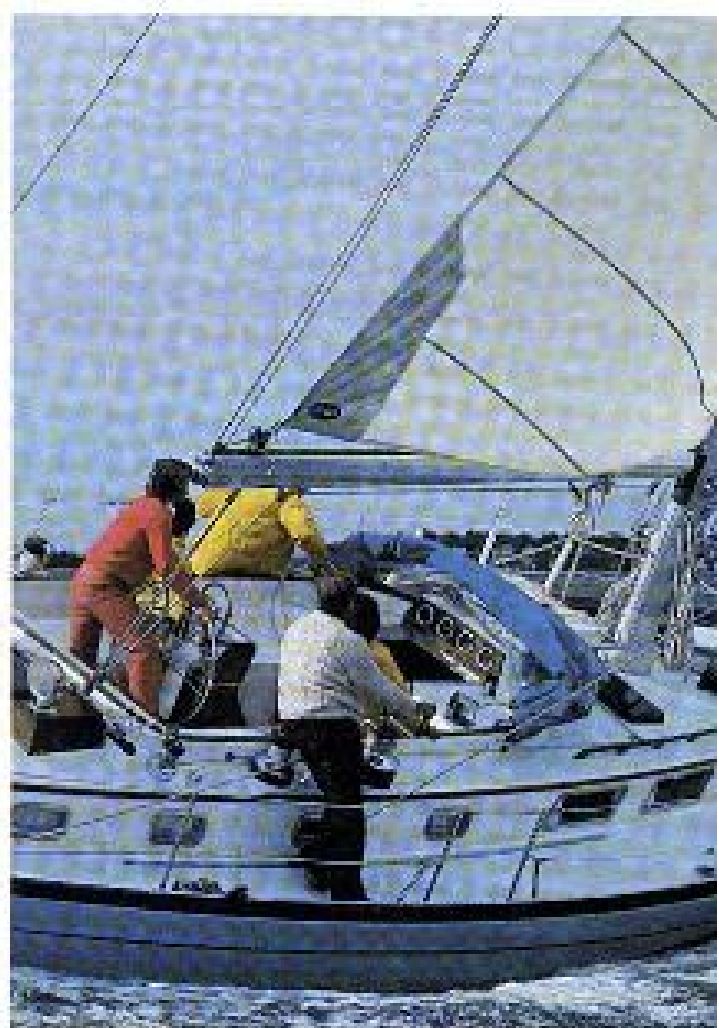
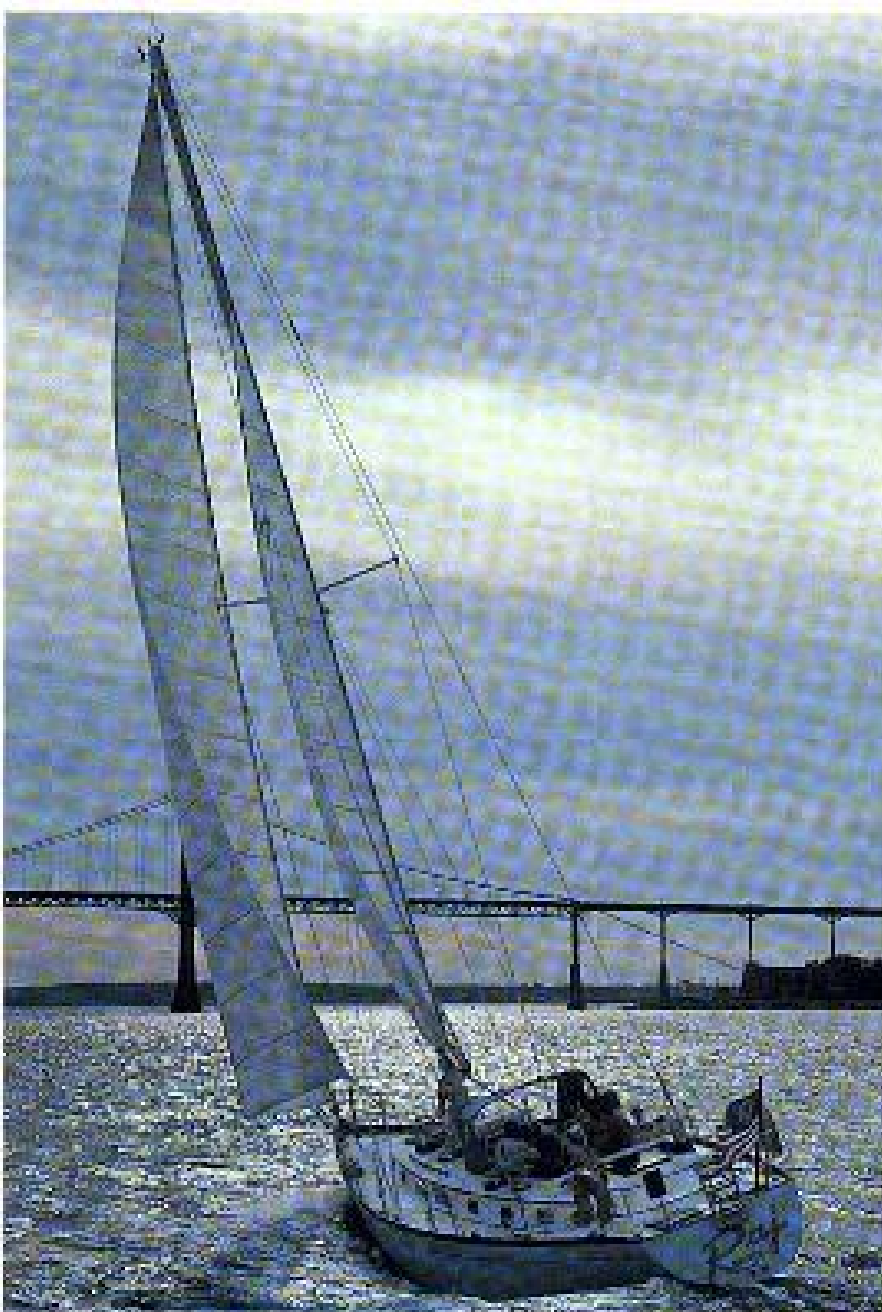


In the

bristol 45.5

tradition





Stability — Speed — Gratifying Comfort!

The Bristol 45.5 combines the inspired design of Ted Hood and the meticulous craftsmanship of Bristol Yachts in an attractive responsive cruiser-racer. Built for the discriminating sailor who knows the difference, the 45.5 features luxurious accommodations for comfortable cruising and the speed and stability to make it competitive for both club and long distance racing. This proven design epitomizes the obsessive concern for quality of workmanship and structural integrity built into every Bristol Yacht. Here's what to look for!



Performance:

Outstanding stability and speed! The Bristol 45.5 is packed with a wealth of carefully planned and executed features that reflect the vast experience and attention to detail of both Ted Hood's design staff and Bristol Yachts' craftsmen. The 45.5 gets top performance from features like a medium-heavy displacement keel-centerboard design (for favorable wetted surface to displacement ratio), a fine entry (for good upwind performance), powerful midship to aft sections (for added stability and good speed off the wind), and a skeg-hung balanced rudder (for sensitive steering) with a skeg aperture to protect the propeller. The best proof of performance is to actually sail and experience the outstanding stability and speed of the Bristol 45.5.



Interior Elegance:

The Bristol 45.5's all wood interior is both spacious and luxuriously appointed with generous use of teak or mahogany (Brunzeel bulkheads and Honduras trim). Quality of workmanship is prevalent in the joiner work and hand laid teak and holly cabin sole which complements both the high quality standard equipment and beautiful optional furniture. Gratifying comfort is afforded by the privacy of two separate staterooms (each with own electric head and shower). Your preference of center or aft cockpit arrangement is available in this shallow-draft centerboard yacht which draws 4'11" (CB up) or 1'0" (CB

Hull & Deck:

Molded high-impact fiberglass reinforced polyester resin . . . largely woven roving, strongest material available. Hull and deck thicknesses vary to suit structural demands. Deckhouse, deck and cockpit are integrally molded. Deck clamp and cove stripe molded with hull. Non-skid pattern molded into deck, seats, cabin top and cockpit. Deck layout reflects careful planning. Opening hatch forward is large enough to permit handling sail bags. Molded sea hood is standard and molded rail from sea hood aft is perfect mount for dodger. All rails, coaming covers and trim are teak . . . furnished natural, sealed or varnished (optional).

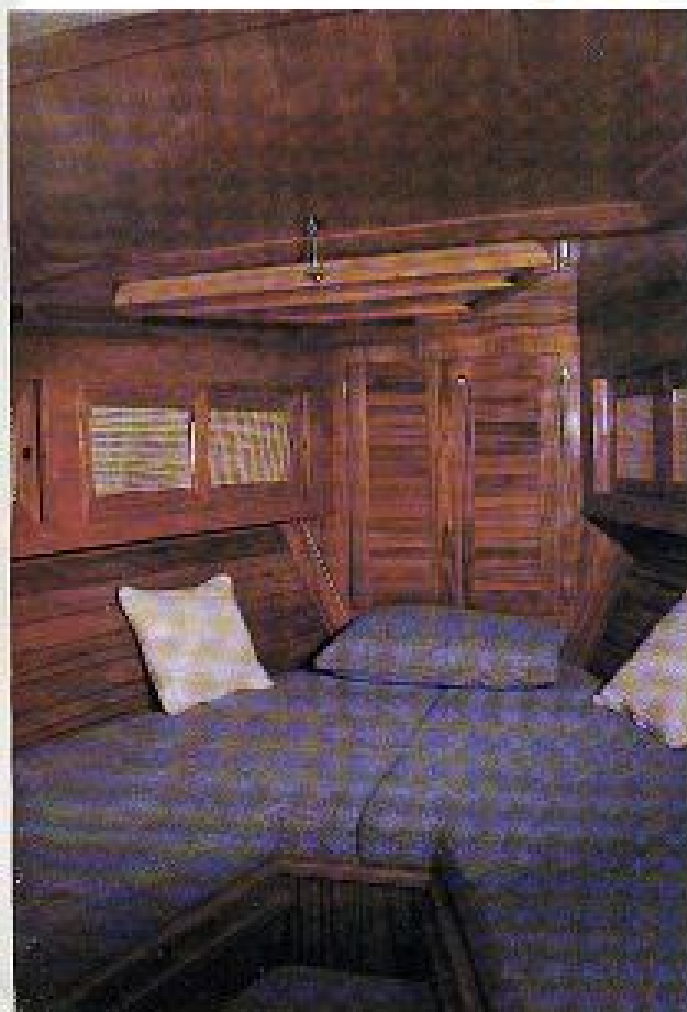
Forward Cabin:

This stateroom is available in the traditional V-berth arrangement and features a bit more elegance than you would normally expect. Fine woods are hand-crafted into the closets, berths and dovetailed drawers which epitomize the quality workmanship Bristol has built its reputation on. There is also separate access to a well appointed head with hot and cold pressure water and shower.

Main Salon:

Both the open space look of Ted Hood's design and the attention to detail provided by Bristol craftsmen are especially notable in the large salon area. Ample room for lounging and the L-shaped dinette make an ideal social setting. The beautifully varnished

interior comes in your choice of teak or mahogany (Brunzeel bulkheads and Honduras trim). Starboard transom berth or suivel chairs (optional) and ample storage throughout provide the type of accommodations one comes to expect from a Bristol.



Aft Cabin:

The handsome and spacious master stateroom was designed to please the discerning skipper. There's plenty of room with a choice of split bunks or king size berth, sitting area, hanging locker, (cedar lined) storage drawers and a private head with tile floor and stall shower (hot and cold pressure water).





Galley:

The spacious and efficient galley, located adjacent to the companionway, is thoroughly equipped for your cruising needs. Stainless steel ice box, 12V Crosby refrigeration, deep sinks, hot and cold pressure water and three burner propane gas range with oven are all standard equipment. Combine these features with the large counter surfaces, racks and storage drawers all arranged to keep the cook happy.

Standard Equipment:

Hull: Hand lay-up, with alternate layers of mat and woven roving. A 4-inch flange integrally molded below the top edge to receive the deck. Bronze seacocks on all through-hull fittings.

Deck: Hand lay-up, with mat, cloth and balsa core; gelcoated liner with wood paneling and vinyl.

Ballast: Lead, 15,000 lbs., internally cast.

Centerboard: Fiberglass, with lead ballast, steel rods and bronze pin through fiberglass pipe; stainless wire rope runs through fiberglass and stainless pipe to Merriman C/B winch on cabin house.

Rudder: Fiberglass, molded around bronze plates welded to bronze rudder post and bearing on bronze rudder shoe.

Machinery: Engine: Westerbeke 58 with 2:1 short profile sailing transmission, 1 1/4" bronze propeller shaft and outlass bearing mounted on fabricated glass, mahogany and stainless steel beds. Water lift muffler. Oil and water alarms. Drip pan under engine. Propeller: 3 blade.

Engine Compartment: Insulated, lead lined, ventilated.

Fuel Tanks (4): 100 gallons, stainless steel. Alternator: 2 - 12 Volt, 55 amp each.

Steering Gear: Edson - with controls, pedestal guard and brake mounted on pedestal; emergency tiller; compass - 6" Ritchie, black non-glass finish.

Domestic Water Tanks (3): Stainless steel, 1 bow - 80 gallons; 2 under sole part and starboard - 50 gallons each.

Pressure Pump: 12 Volt Par pump.

Hot Water Heater: Raritan 12 gallon with heat exchanger, copper tubing and polyurethane on cold water system.

Sinks: Double stainless steel 10" x 14" x 9 3/4" deep in galley with mixing faucet. Porcelain sinks in heads.

Showers: 1 in each head with Lovett sump pump for discharge.

Interior Joiner Work: Teak with holly inlay cabin sole, hand-layed, screwed, glued, and bunged.

Bulkheads — choice of teak or Brunzeel mahogany glassed in place with either teak or Honduras mahogany trim.

Formica color for counters and head available for owner's selection.

Head soles — ceramic tile.

Finished bulkheads and trim sealed and hand rubbed varnish.

Cabin sole — sealed.

Dinette Table — fixed with drop leaves.

Exterior: Two teak dorade boxes forward, trim, grab rails and toe rails.

Deck Hardware: Stainless steel, satin chrome, or anodized aluminum.

Stemhead — fabricated stainless steel with tack, chocks and 1 bow roller.

Cleats: 2 - 12" Bow
2 - 10" Midship
2 - 10" Aft

Vents: 2 - Perko 4" chrome.

Nicro Pico Ball Bearing Traveller.

Double bow and stern rails, lifelines and stanchions with 2 gates.

Cast ports with opening ports in heads.

Genoa Track — Anodized aluminum "T" track — 1 1/4" bolted inboard.

Blocks — Schaeffer Series #9 and #11.

Hatches — Bomar, opening in forward cabin, midships, aft cabin and 2 lazarettes. Sliding fiberglass hatch for companionway with sea hood and rails.

Anchor well and chain locker.

Winches (Lewmar): 2 #55C Jib Sheet
1 #40C Main Sheet
1 #44C Jib Halyard
1 #40C Main Halyard

Electrical: 12 Volt grounded throughout. Hull, rigging and machinery fully grounded with copper bonding straps.

Bass Panel — with 26 DC circuit breakers, 7 AC breakers, 3 indicators and 1 - 30 amp shore power outlet 7 - 110V outlets.

3 Batteries — 165 amp hours each, total 495 amp hours in 2 banks, one for engine, 2 for ships service with switch for emergency start.

Electric Bilge Pump.

Battery Charger — 40 amp.

12V Crosby refrigeration with cold plates in stainless steel box.

Lighting — Fluorescent fixtures with cone and dome lights in appropriate areas.

International Running Lights.

Stove: Propane, 3 burner stainless steel with oven.

Spars: Fabricated aluminum extrusions, anodized with stainless steel fittings, internal halyards, tapered spreaders.

Standing Rigging: Stainless steel with Navtec turnbuckles.

Optional Equipment: Teak Cockpit Grate, Varnished Exterior (5 Coats), Varnished Cabin Sole (5 Coats), Higher 4" Flared, Tapered Toe Rails, Hood Stoway Mast, Hood Sea Furl, Additional Opening Ports, Screens, Ketch Rig, 2 Additional Dorade Boxes Aft With Chrome Vents, Photos and drawings may show optional equipment.

Specifications subject to change without obligation or notice.

Performance:

Outstanding stability and speed! The Bristol 45.5 is packed with a wealth of carefully planned and executed features that reflect the vast experience and attention to detail of both Ted Hood's design staff and Bristol Yachts' craftsmen. The 45.5 gets top performance from features like a medium-heavy displacement keel-centerboard design (for favorable wetted surface to displacement ratio), a fine entry (for good upwind performance), powerful midship to aft sections (for added stability and good speed off the wind), and a skeg - hung balanced rudder (for sensitive steering) with a skeg aperture to protect the propeller. The best proof of performance is to actually sail and experience the outstanding stability and speed of the Bristol 45.5.

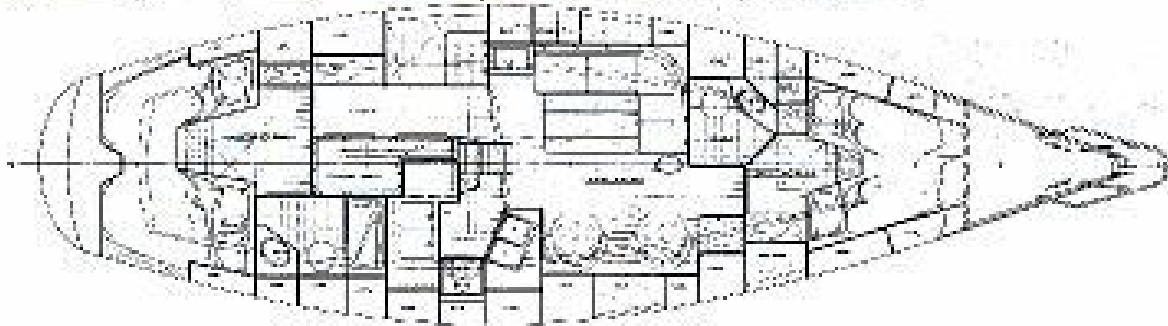
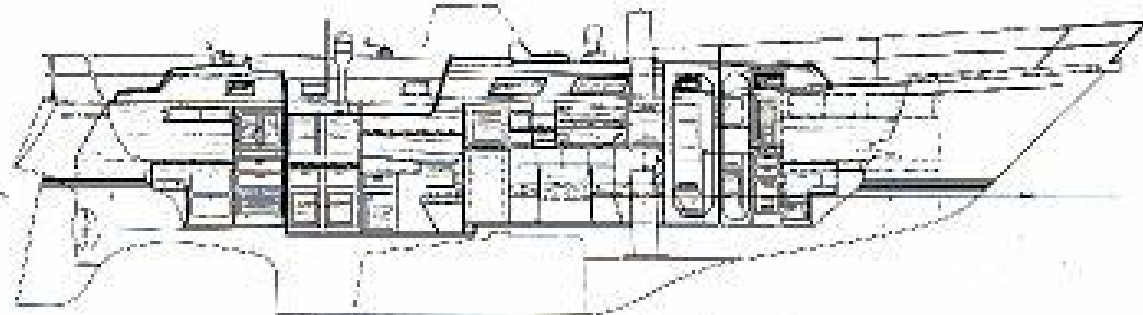


Interior Elegance:

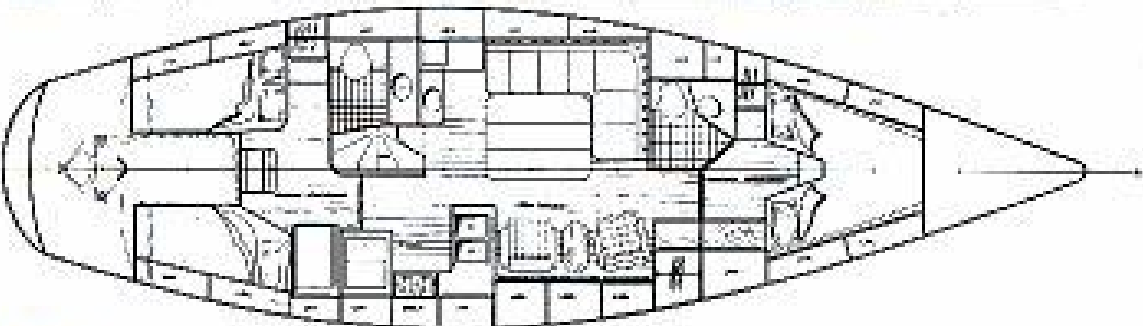
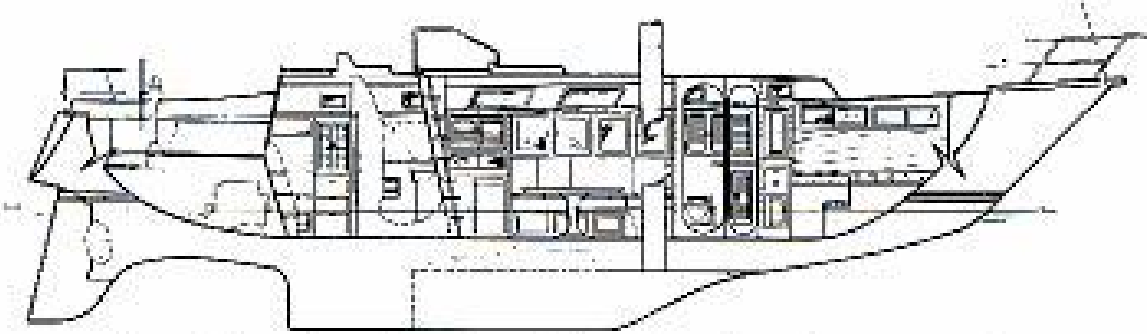
The Bristol 45.5's all wood interior is both spacious and luxuriously appointed with generous use of teak or mahogany (Bronzeel bulkheads and Honduras trim). Quality of workmanship is prevalent in the joiner work and hand laid teak and holly cabin sole which complements both the high quality standard equipment and beautiful optional furniture. Gratifying comfort is afforded by the privacy of two separate staterooms (each with own electric head and shower). Your preference of center or aft cockpit arrangement is available in this shallow-draft centerboard yacht which draws 4'11" (CB up) or 11'0" (CB down).

Design Specifications

Models:	Sloop or Ketch	Draft (CB up)	4' - 11"	150% Genoa	791 Sq. Ft.
Designer:	Ted Hood	(CB down)	11' - 0"	Speed under power	8.0 knots
Builder:	Bristol Yachts	Displacement	34,660#	I	50
LOA	45' - 3"	Ballast	15,000#	I	56
LWL	37' - 3"	Main	445 Sq. Ft.	I	18.5
Beam (max)	13' - 2 1/2"	130% Genoa	680 Sq. Ft.	E	18



CENTER COCKPIT



AFT COCKPIT

Quality Without Compromise

A Superior Investment

Traditional Bristol quality construction and master craftsmanship assure lasting value and make the purchase of the Bristol 45.5 a long term investment that will pay excellent dividends. Designed

for the yachtsman who enjoys cruising comfort without sacrificing performance, the Bristol 45.5 must be seen and sailed to be truly appreciated. Contact your nearest Bristol dealer.



bristol yachts
Franklin Street
Bristol, R.I. 02809